

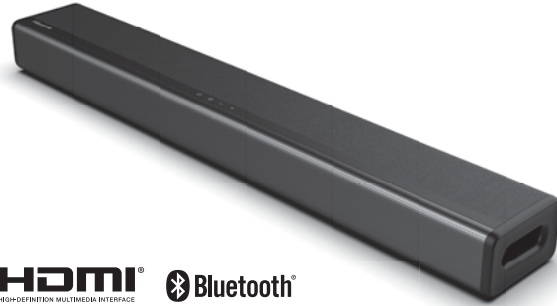
Hisense

EN

Quick Start Guide

2.1 Channel Sound Bar Home Theater System

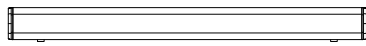
Model: HS214



Manufactured under license from Dolby Laboratories. Dolby, Dolby Audio, and the double-D symbol are trademarks of Dolby Laboratories.



What's in the Box



Main Unit



Remote Control



AC Power Cord



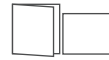
Optical Cable



Wall Mounting Kit



R03(Size AAA)Battery x2



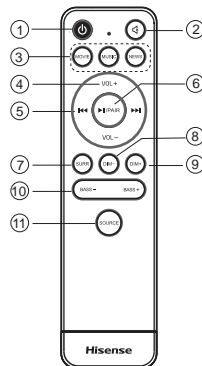
User Manual/
Quick Start Guide



HDMI Cable

1 Remote Control

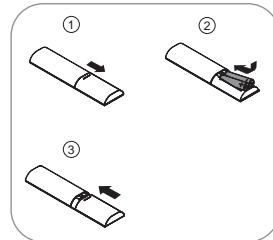
- 1 **⏻ (ON/OFF)** Switch the unit between ON and STANDBY mode.
- 2 **🔇 (MUTE)** Mute or resume volume.
- 3 **EQ** buttons Select MOVIE/MUSIC/NEWS sound effect.
- 4 **VOL+/VOL-** Increase/decrease the volume level.
- 5 **⏮, ⏭** In Bluetooth/USB mode: Skip to previous/next track.
- 6 **⏸/PAIR** Play/pause/resume playback in Bluetooth/USB mode. Press and hold to activate the pairing function in Bluetooth mode or disconnect the existing paired Bluetooth device.
- 7 **SURR** Adjust the surround ON/OFF.
- 8 **DIM-** Decrease the display brightness.
- 9 **DIM+** Increase the display brightness.
- 10 **BASS+, BASS-** Increase/decrease the bass level.
- 11 **SOURCE** Select the play mode.



First-time use:

Put the 2 x AAA batteries (included) into the remote control before use.

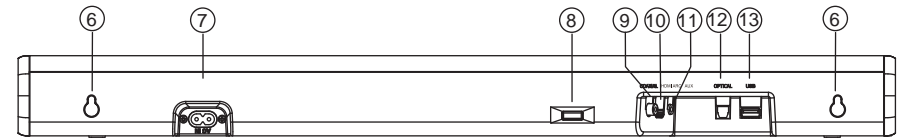
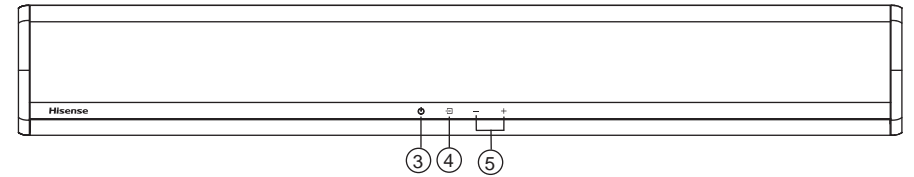
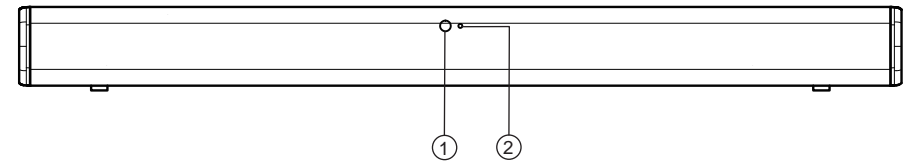
Replace the Remote Control Battery:



⚠ Do not expose the battery or battery pack to sunshine, fire or other direct heat sources.

2 Identifying the Parts

Main Unit



1 Remote Control Sensor

Receive signal from the remote control.

2 LED Indicators

- Red : In **STANDBY** mode.
- Orange : In **Optical** mode.
- Blue : In **Bluetooth** mode.
- White : In **HDMI ARC** mode.
- Light green : In **Coaxial** mode.
- Green : In **AUX** mode.
- Yellow : In **USB** mode.

3 ⏻ (ON/OFF) Button

Switch the unit between ON and Standby mode.

4 (SOURCE) Button

Select the play mode.

5 +/- (Vol+/Vol-) Buttons

Increase/decrease the volume level.

6 Wall Mount

Install the wall mounting screws into the wall mount of the unit.

7 AC~ Socket

Connect to the power supply.

8 IR Repeater

Transfer the signal received from remote control to the TV

9 COAXIAL Socket

Connect to a coaxial audio output on the TV.

10 HDMI ARC Socket

Connect to a TV via HDMI cable.

11 Aux Socket

Connect to an external audio device.

12 OPTICAL Socket

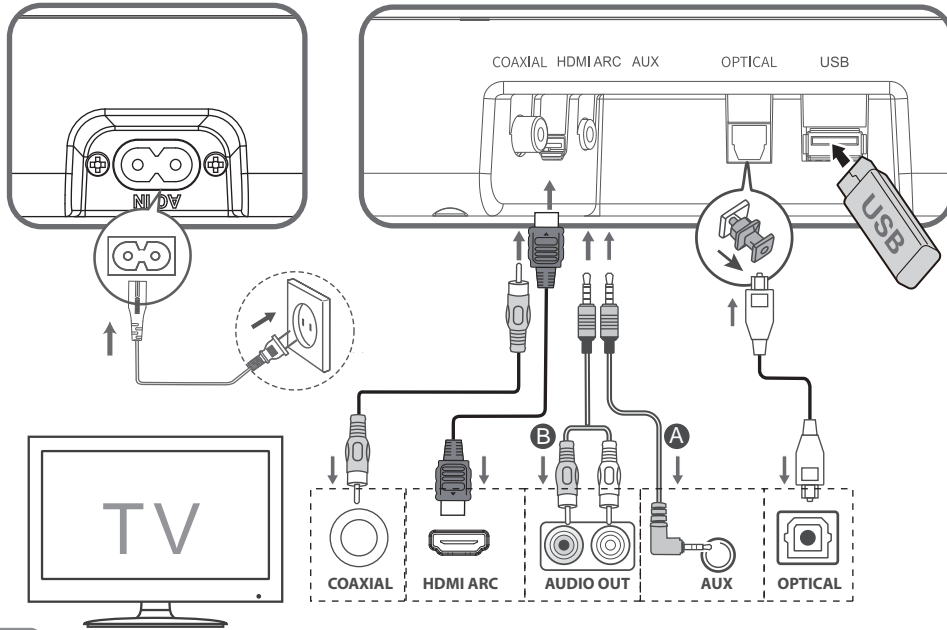
Connect to an optical audio output on the TV.

13 USB Socket

Insert the USB device to play music.

3 Connections

- Before connecting the AC power cord, ensure you have completed all other connections.



4 Basic Operation

Standby/On

When you first connect the main unit to the mains socket, the main unit will be in Standby mode.

- Press the **⏻** button on the unit or on the remote control to switch the unit ON.
- Press the **⏻** button again to switch the unit back to STANDBY mode.
- Disconnect the mains plug from the mains socket if you want to switch the unit OFF completely.

Auto Wake

- If a TV or an external device is connected AUX/ OPTICAL / COAXIAL / HDMI ARC), the unit will switch on automatically when the TV or the external device is switched on.

Adjust the Volume

Press the **VOL+** / **VOL-** buttons on the unit or on the remote control to adjust the volume.

If you wish to turn the sound off, press the **🔇** button on the remote control. Press the **🔇** button again or press the **VOL+** / **VOL-** buttons on the unit or on the remote control to unmute.

Note: While adjusting the volume, the status LED indicator will flash once. When the volume has hit maximum/minimum value level, the status LED indicator will flash quickly.

Automatic Power Off Function

The unit automatically turns to **Standby** mode after about **15** minutes if the TV or the external unit is disconnected or switched off.

- To switch the unit off completely, disconnect the mains plug from the mains socket.
- Please turn the unit off completely to save energy when not in use.

Select Modes

Press the **☑** (SOURCE) button repeatedly on the unit or the **OPTICAL, COAXIAL, HDMI ARC, ⌘ (Bluetooth), USB** and **AUX** buttons on the remote control to select the desired mode.

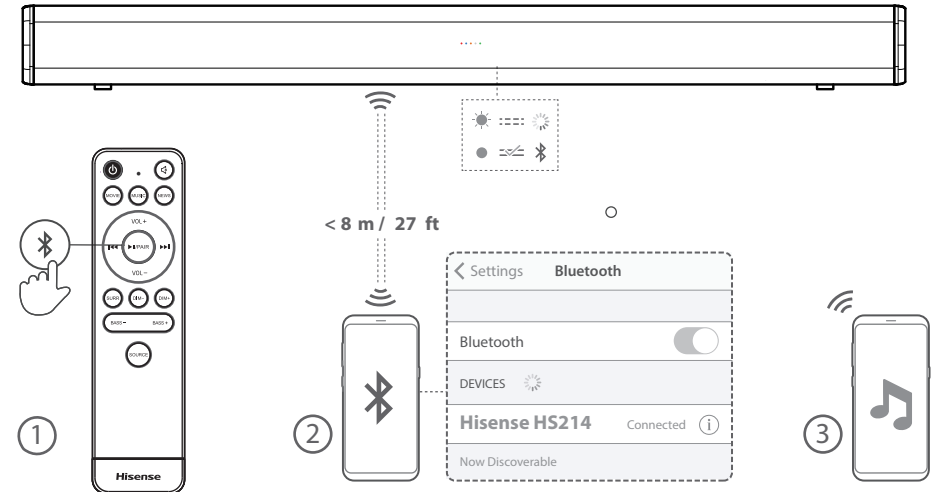
The LED indicator on the front of the main unit will show which mode is currently in use.

Select a Preset Sound Effect

While playing, press the **NEWS / MOVIE / MUSIC** buttons on the remote control to select the preset equalizers:

- MOVIE** (recommended for watching movie)
- MUSIC** (recommended for listening to music)
- NEWS** (recommended for listening to news)

5 Bluetooth(⌘) Operation



6 Wall Mounting

