

# Hisense

10K  
BTU

SMART PORTABLE AIR CONDITIONER

up to 300 sq.ft.

## Model: AP- 10CW1SGRS00

Cooling, Fan & Dehumidifier functions



### Amazon Alexa

Hisense and Amazon Echo devices work together with voice control through Alexa.



### HiSmart Air App

Control your air conditioner from your iOS and Android smart phone. The app features a built-in programmable thermostat for quick adjustments, fan speed settings and sleep mode setting for low noise activity.



### I-Feel™ Remote Control

The I-Feel™ temperature sensor built into the remote control senses its surrounding temperature, and transmits the signal back to the unit, providing maximum comfort.



### Warranty

2 Years Parts & Labour.

## Cool, Calm and Connected.

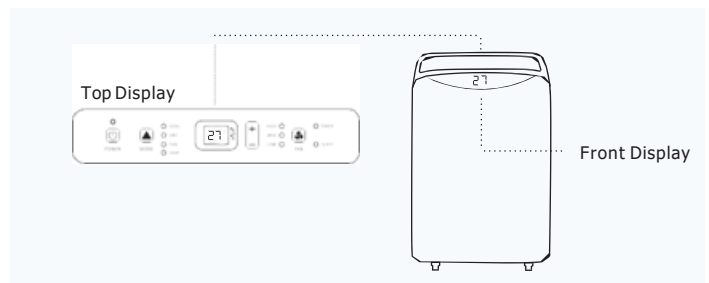
The Hisense AP- 10CW1SGRS00 Smart Portable Air Conditioner provides the utmost in performance and convenience than ever before. Connect to your HiSmart Air app to control your portable air conditioner through your phone or Amazon Alexa to control your portable air conditioner through your voice. Louvers automatically opens to a pre-set position after the unit is powered on while a front-facing temperature display makes it easier to see the temperature from across the room. This Hisense smart portable air conditioner is the perfect product to keep you cool, calm and connected.

#### TECHNICAL SPECIFICATIONS

Performance	
Hisense-Model	AP-10CW1SGRS00
Cooling Capacity (BTU)	10,000 BTU
Maximum Cooling space	300 sq. ft.
Refrigerant	R-410A
NoiseLevel in dB(A)	47~48 dB(A)
Electrical	
Voltage / Freq / Amps	115V/60Hz / 11.8A
Control Features	
Unit Control Type	Electronic
Fan Control	Button
Thermostat Control	61~86 °F
Display Type	Dual LED
Sleep Mode	Yes (on remote)
Dry Mode	Yes
Smart Mode	Yes (on remote)
Cooling Speeds	3 speeds
Temp Display Units	°C / °F
Clock	Yes (on remote)
Timer	24 Hr
Auto Restart	Yes
General Features	
Removable Filter	Yes
Washable PP Filter	Yes
Motorized Air Swing	Yes (on remote)
Vent System	Single Hose, 5.9"D x 59"L
Dehumidification	3.23 Pints / hr
Airflow (CFM)	204 - 278
Accessories	
Remote Control	Yes
Batteries	Yes -included
Air Hose	Yes
Approvals	
Safety	ETL
Energy	CEC

Shipping	
Unit Dimension WxDxH (mm)	444 x 375 x 711
Carton Dimension WxDxH (mm)	480 x 381 x 889
Net Weight /Gross Weight (Kg)	29.2 / 32.2
Unit Dimension WxDxH (inch)	17.5 x 14.8 x 28.5
Carton Dimension WxDxH (inch)	18.9 x 15 x 35
Net Weight /Gross Weight (lbs)	64.4 / 71
Warranty/UPC	
Parts & Labour	2 years
UPC	819130021270

#### Dual Display



All product, product specifications, and data are subject to change without notice to improve reliability, function, design or otherwise. ©2018 Hisense Canada, All rights reserved